

Propelled by the Pandemic: New Ways of Providing Clinical Care

Indigenous Primary Care and Policy Research Network (IPH CPR) Launch

Cheryl Barnabe, MD MSc FRCPC

Associate Professor, Medicine and Community Health Sciences

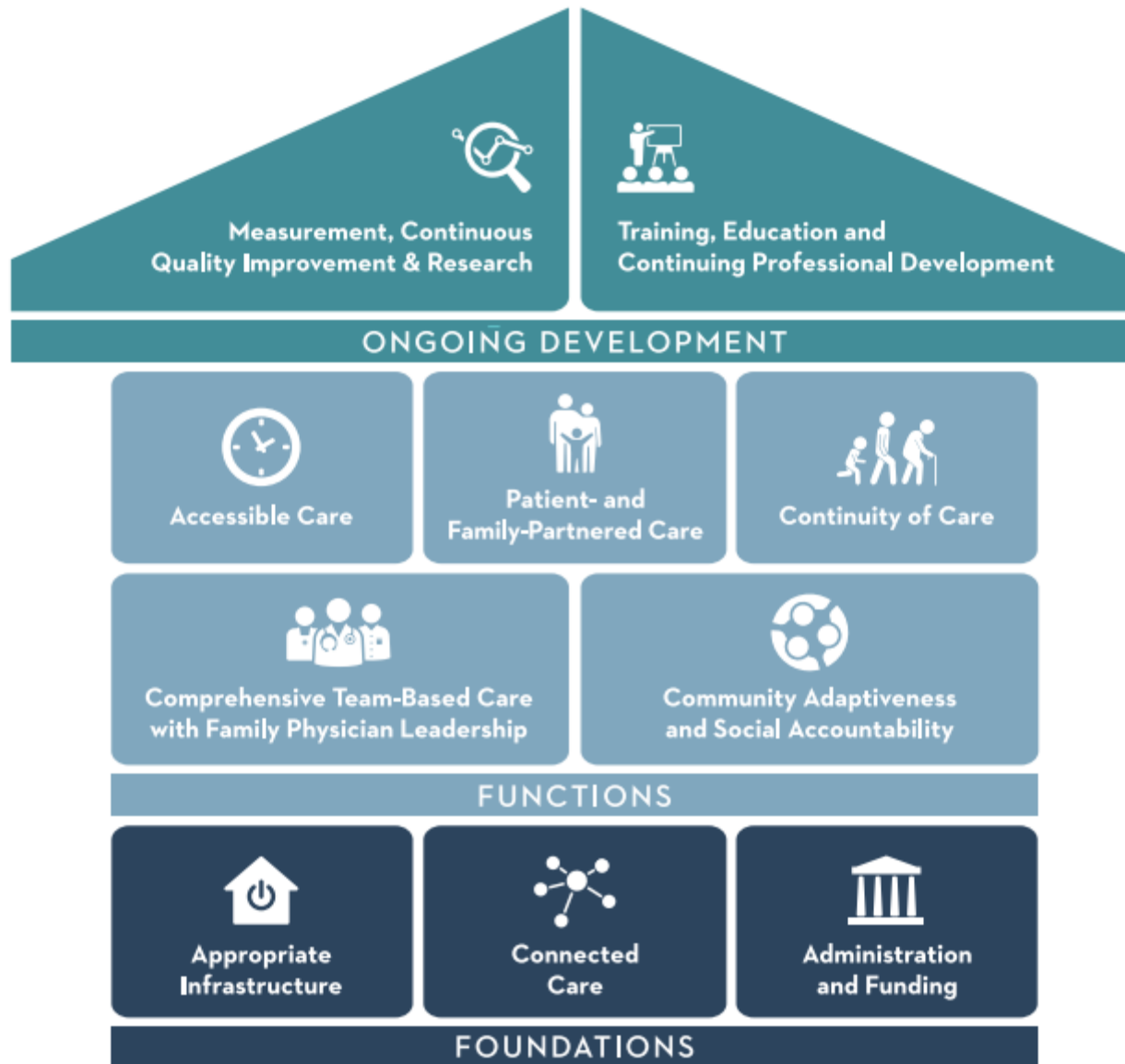


UNIVERSITY OF CALGARY
CUMMING SCHOOL OF MEDICINE









Rural and Remote Cardiology During the COVID-19 Pandemic: Cardiac Society of Australia and New Zealand (CSANZ) Consensus Statement[#]

Ruth H. Arnold ^{a,*}, Philip A. Tideman ^b, Gerard P. Devlin ^c,
Gerard E. Carroll ^{d,e}, Alex Elder ^a, Harry Lowe ^{a,f,g,h}, Peter S. Macdonald ^{e,i},
Paul G. Bannon ^g, Craig Juergens ^{a,e,j}, Mark McGuire ^{g,h,k}, Justin A. Mariani ^l,
Sean Coffey ^m, Steven Faddy ⁿ, Alex Brown ^o, Sally Inglis ^p,
William Y.S. Wang ^q

Propelled by the Pandemic: New Ways of Providing Clinical Care

Indigenous Primary Care and Policy Research Network (IPH CPR) Launch

Cheryl Barnabe, MD MSc FRCPC

Associate Professor, Medicine and Community Health Sciences



UNIVERSITY OF CALGARY
CUMMING SCHOOL OF MEDICINE